



明愛粉嶺陳震夏中學

Caritas Fanling Chan Chun Ha Secondary School

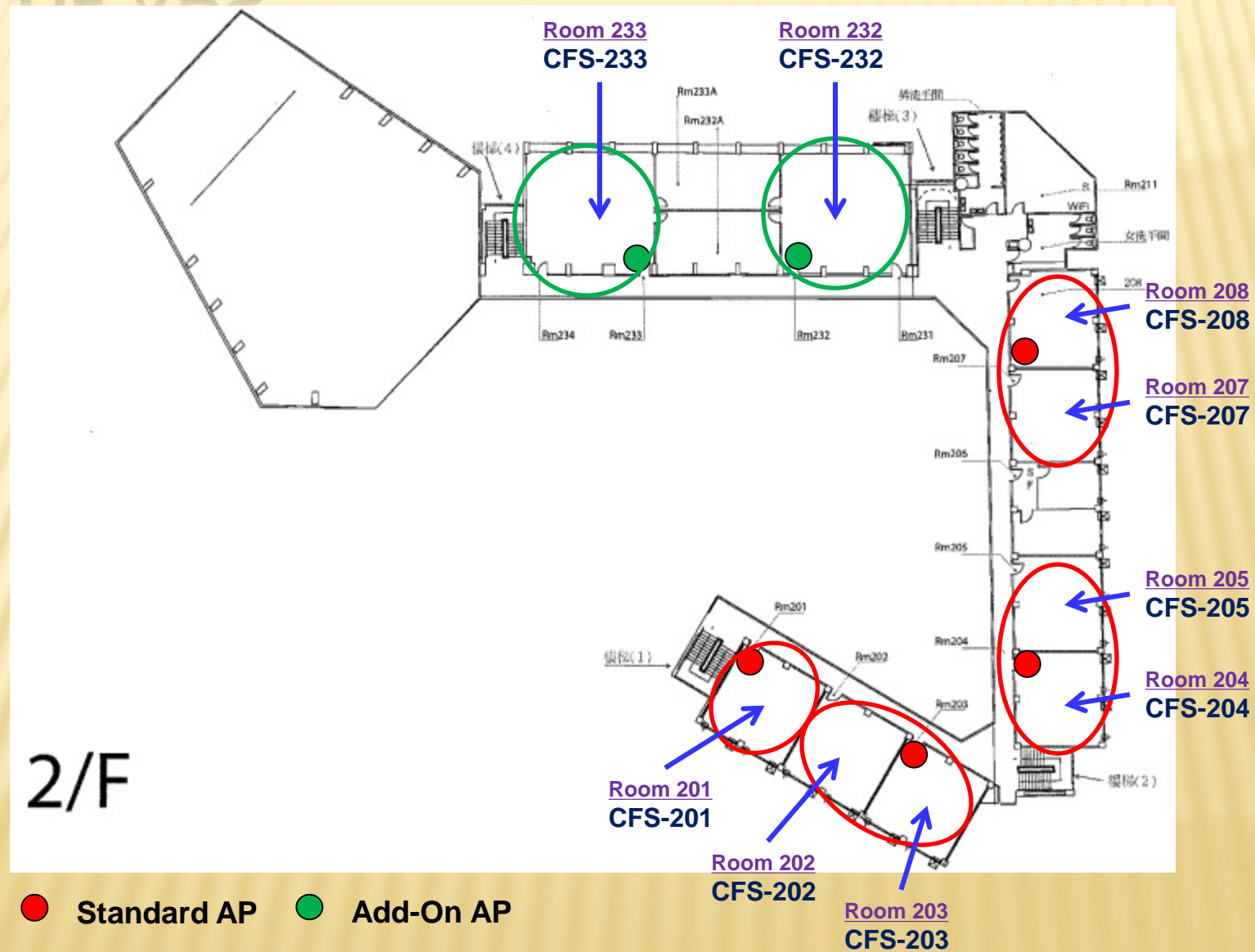
BRIEFING SEMINAR FOR WIFI 900A SCHOOLS

23rd November 2017

BACKGROUND

- WiFi 100 School in 2014-17
- Shared APs
- 802.11ac
- Subscription Mode
- HKEdCity Authentication
- Trunks, Cables and APs owned by the Contractor

LOCATION OF APS



QUANTITY OF APS

Floor	Standard Provision	Add-On
G/F	0	1
1/F	0	3
2/F	4	2
3/F	5	0
4/F	3	1
5/F	4	0
Total	16	7

WIFI100 (14-15, 15-16, 16-17)

Advantages

- Competitive Price
- Cloud Controller
- Roaming Quality

Disadvantages

- Trunks and Cables Ownership
- Limited WiFi Coverage
- Adjacent Rooms WiFi Stability
- Authentication Limitation

AIMS

- Whole School Coverage of WiFi
- Individual AP in each Classroom
- Trunks, Cables and APs Owned by School
- Speed and Stability of WiFi
- Authentication Method Change

TENDERING CONSIDERATIONS

- Trunks, Cables and APs Ownership
- Price
- Number of APs
- Coverage
- Reputation and Experience

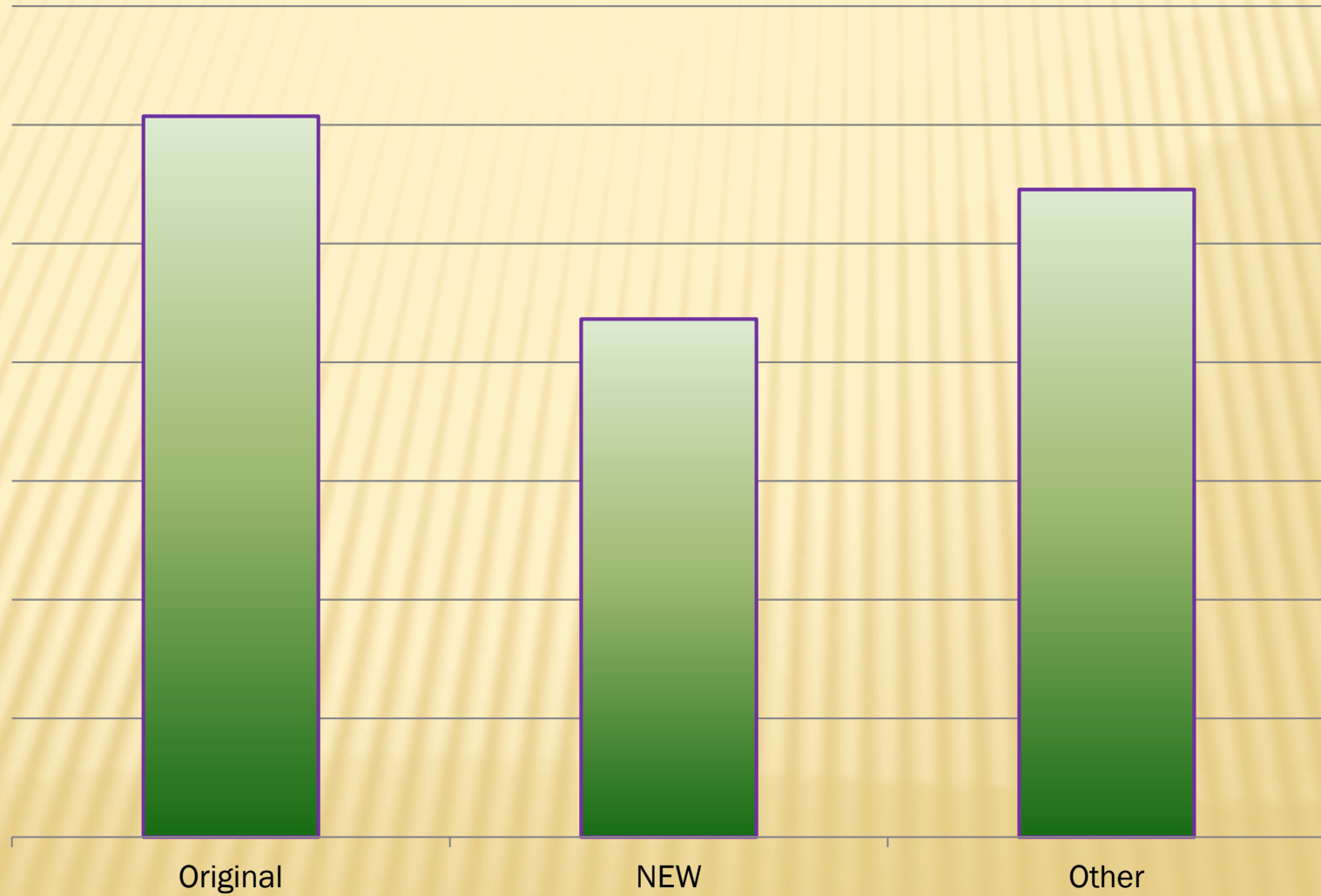
RESULT OF TENDER

- Price
- Broadband
- WiFi Coverage
- Number of APs
- Generation of APs
- Lease to Own

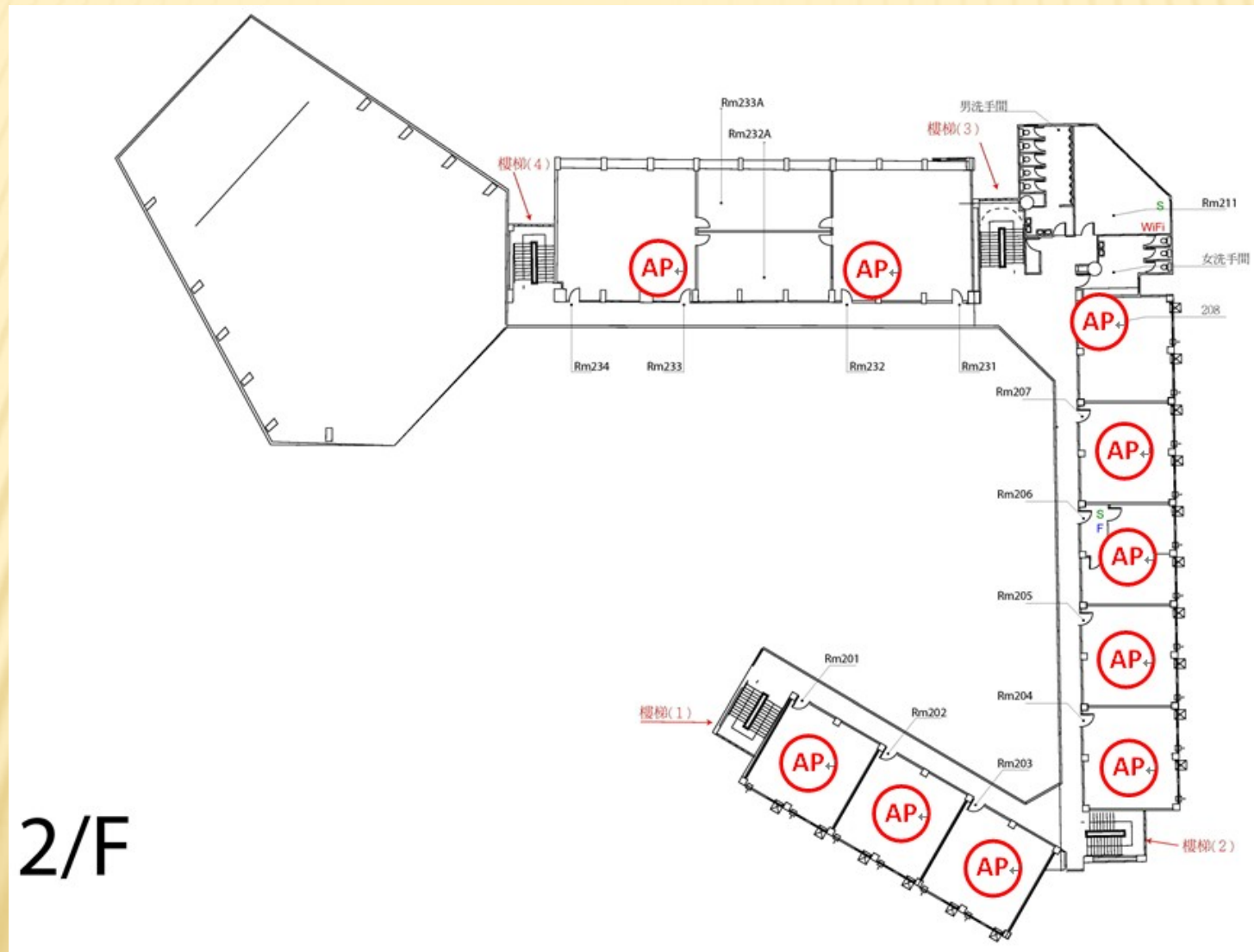
COMPARISON TABLE

Company	Original	NEW	Other
Number of AP	67	54	54
Generation of AP	Wave 1	Wave 2	Wave 2
Broadband Service (Option 1)	500Mbps	1000Mbps	500Mbps
Contract End Arrangements (Option 1) trunks, conduits,cables, LAN ports, power points only	Lease to Own	Lease to Own	Lease to Own
Contract End Arrangements (Option 2) All Fixtures in Option 1 and all Network Equipments	\$50,000	Lease to Own	Lease to Own

PRICE



LOCATION OF APS



DIFFICULTIES

- Removal of Trunks and Cables
- Decision on Choosing APs
- Ownership of the Equipment in the Future
- Signal Interference

Q & A

■ Thank You