

Learning and Teaching Expo (Dec 2020): SEN Theatre

Making Online Learning Accessible to Students with Special Educational Needs

Helen Chan

Secretary

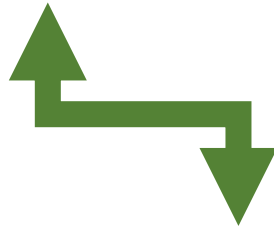
IFLA Library Services to People with Special Needs Section

10/12/2020



Accessibility in Departing Thought

[Dis]ability



[In]accessibility

INFORMATION ACCESSIBLE FOR ALL

Closed Captioning

What Disorders Benefit from Closed Captions?



IFLA IL & LSN Joint Webinar II

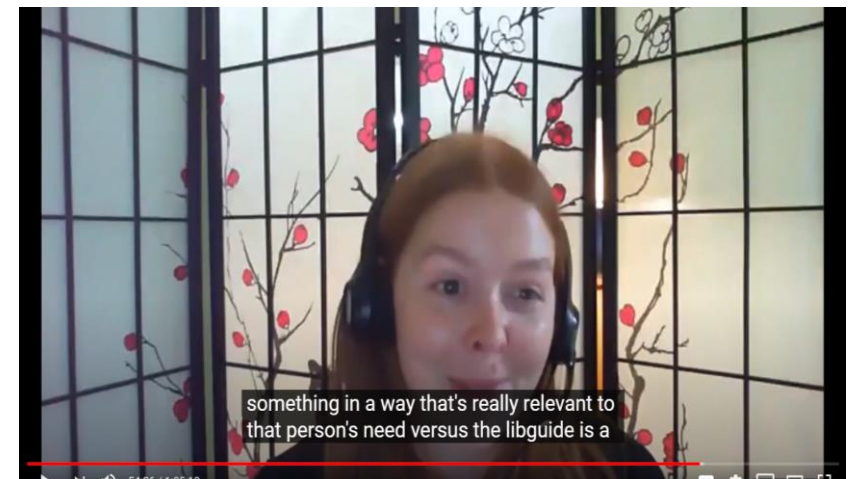
Sept 16, 2020

<https://www.youtube.com/watch?v=427iVbLADMI&feature=youtu.be>

IFLA IL & LSN Joint Webinar II

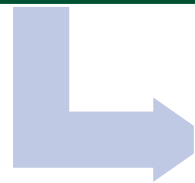
Sept 23, 2020

<https://www.youtube.com/watch?v=427iVbLADMI&feature=youtu.be>



CC@Autism

Monotropism



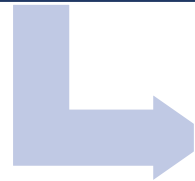
Social Stories



Online Reading To
Learn Strategies

CC@Auditory Neuropathy

Assistive Devices

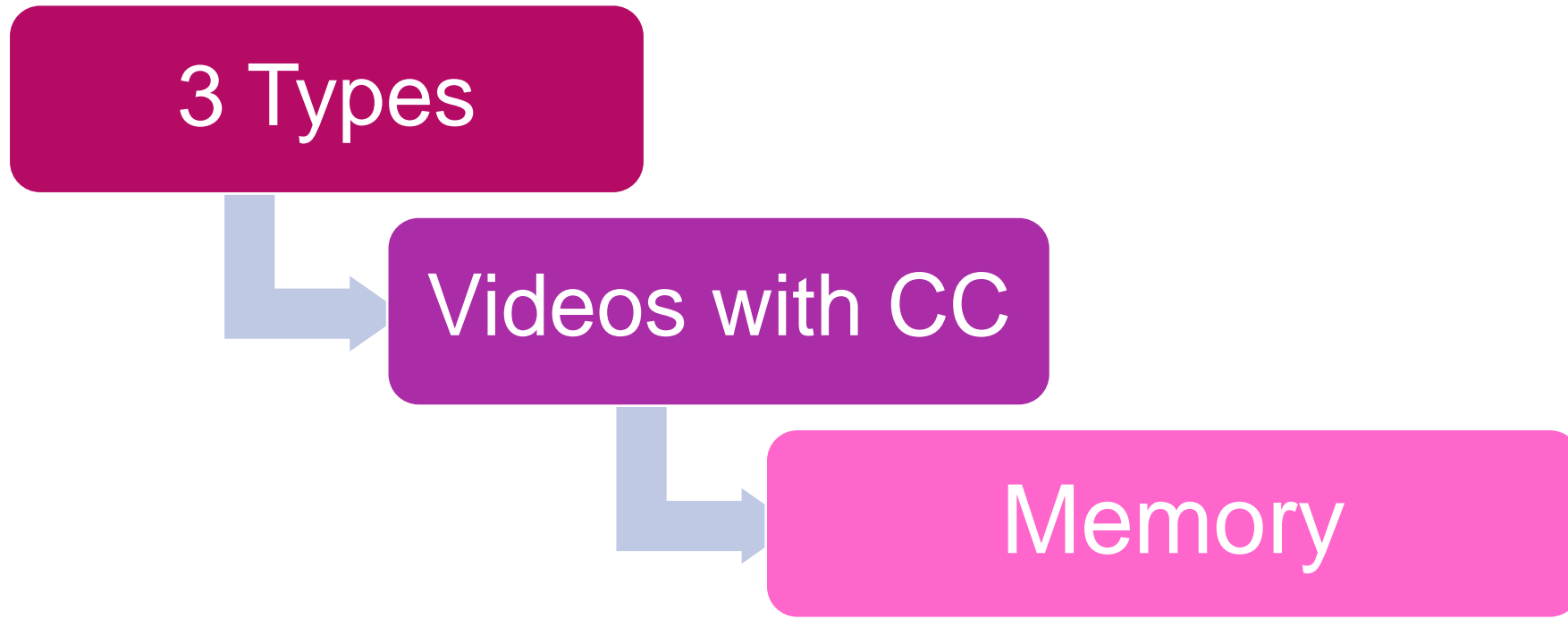


Lip Reading



Online Reading To Learn Strategies

CC@ADHD

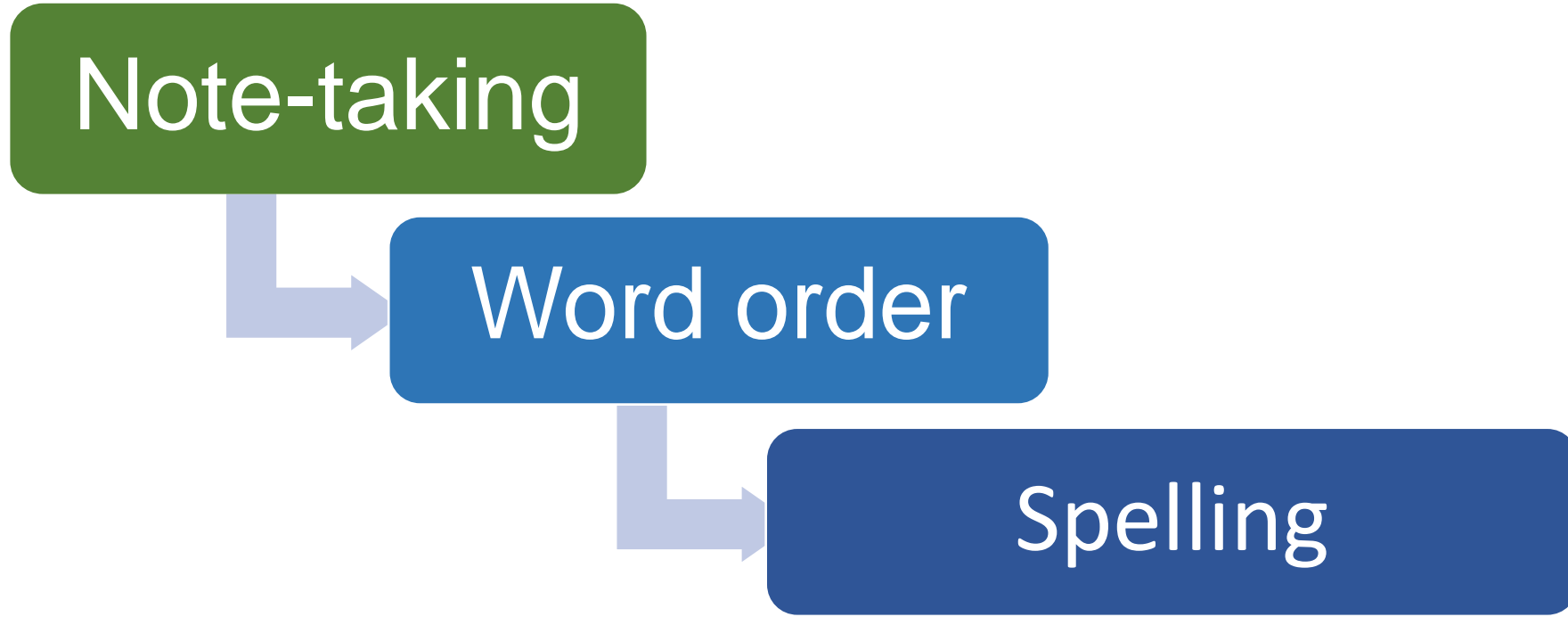


CC@Dyslexia

Note-taking

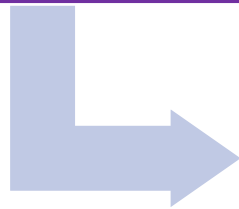
Word order

Spelling



CC@Down Syndrome

Excellent Readers



Good Language Learners



Improve Literacy Rates

ACCESSIBILITY

How to make teaching content accessible?

Zoom Build-ins

1. Streamer-Zoom
2. Closed Captioning
3. Simultaneous Translation

The screenshot displays the Zoom Admin console interface for 'The University of Hong Kong'. The left sidebar contains navigation options: Security, Schedule Meeting, In Meeting (Basic), In Meeting (Advanced), Email Notification, and Other. The main content area is titled 'In Meeting (Advanced)' and lists several settings:

- Report to Zoom:** Allow users to report meeting participants for inappropriate behavior to Zoom's Trust and Safety team for review. This setting can be found on the meeting information panel. Modified Reset
- Breakout room:** Allow host to split meeting participants into separate, smaller rooms. Allow host to assign participants to breakout rooms when scheduling Modified Reset
- Remote support:** Allow meeting host to provide 1:1 remote support to another participant. Modified Reset
- Closed captioning:** Allow host to type closed captions or assign a participant/third party device to add closed captions. Modified Reset
- Save Captions:** Allow participants to save fully closed captions or transcripts. Modified Reset
- Language Interpretation:** Allow host to assign participants as interpreters who can interpret one language into another in real-time. Host can assign interpreters when scheduling or during the meeting. Modified Reset

At the bottom, it indicates '9 languages +' and a blue chat icon is visible in the bottom right corner.

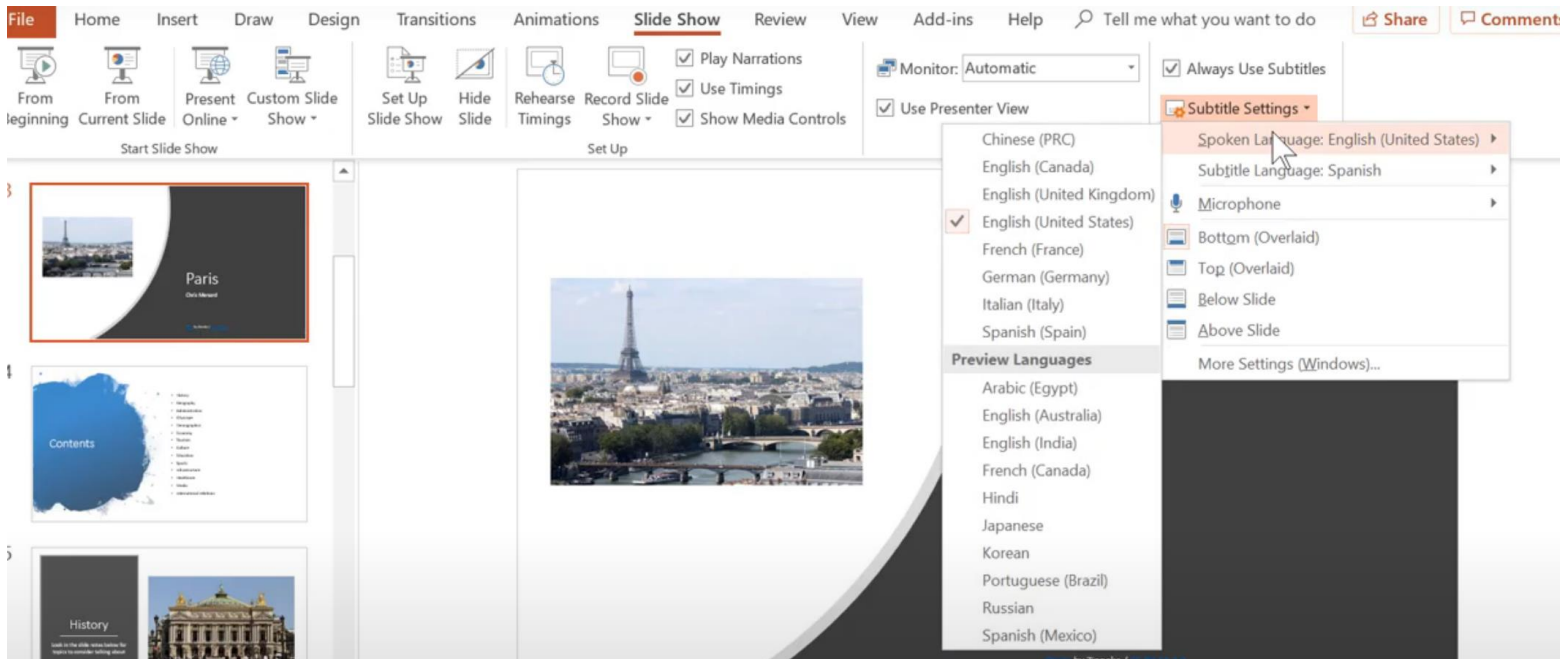
CC@Google Slides

CC button



Subtitles@Microsoft 365

Always Use Subtitles



Source: <https://www.youtube.com/watch?v=3glVapywOEA>

Students with Print Disabilities

Before

- Full URL rather than “click here”
- Read aloud and Tryout

During

- Best practices in presentation
- Audibly describe/spell aloud

After

- Where, when and how to get the recording
- Evaluation

Preparing the Lessons



water

Be
prepared



Keep going

Don't fear
mistakes



Colours

Dress for
the
camera

During the Lessons

On Demand

Manage
Expectations

Time Keeping

Creating Slideshows

Engaging
Students

Audio/Visual

Post-actions

Evaluation

- Survey

Recordings

- Support learning

References

IFLA (2020). Virtual Events Handbook for IFLA Professional Units. IFLA: Professional Support Unit.

Rapp, W. H. (2015). *Universal design for learning in action : 100 ways to teach all learners*. Retrieved from <https://ebookcentral.proquest.com>

Waghorn, Garry. "Beneficial and Detrimental Effects of Dietary Condensed Tannins for Sustainable Sheep and Goat Production—Progress and Challenges." *Animal Feed Science and Technology*, 147.1-3 (2008): 116-39.

thank you

Q & A