

School Library Accessibility

Helen Chan

**Professional Division Committee Chair (Division F) (2021-2023)
International Federation of Library Associations and Institutions (IFLA)**



No One Left Behind



Image source: <https://www.kristinalum.com/accessibility-1/>

Networking

Support

Hybrid

Leadership and
Management

Library
Accessibility
for All

Equality and Inclusion

**Space
Design**

Collections

Services

Programs



School Libraries For All

A common purpose:

The enhancement of
“teaching and learning for all”.

(IFLA School Libraries Section Standing Committee, 2015)

Design For All

A School Library

A physical and digital space in a school that is open and accessible to all.



An Accessibility Library

The UN Convention on the Rights of
Persons with Disabilities (CRPD)

Social inclusion

Marrakesh Treaty

Universal Design

Multi-accessibility



Multiliteracy

Multiple
Channels

Plain
Language

Leadership & Mangement

Libraries' strategic and financial planning

Annual Assessment

Positive Action

Professional Development

Strategy Highlights – Space Design

A School Library

IN-N-OUT



Sensory environment

Passage & Main Entrance: 1.5 m X 2.2
Ramps: 900 mm (w) X 1,150 mm (L)

Multiple Purpose and Convertible Space

Sound beacon

Signage outdoors
& indoors

Infographic

A Sliding door

Passageways:
900 mm (w) X 2,200 mm (H)

Handrails

Easy-to-access Location

Strategy Highlights - Collections

Collection Development Policy

Diversity, Equity & Inclusiveness

Accessible materials



Accessible eMedia and Content



Plain language book



Audio book



Strategy Highlights - Services



Online Vs Offline

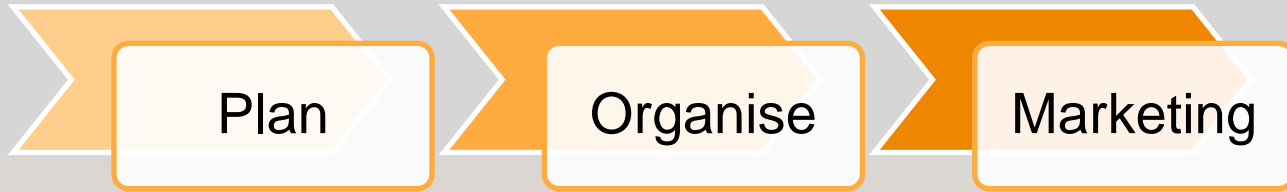
CC

WCAG 2.0

~~Hyperlink~~



Strategy Highlights - Programs



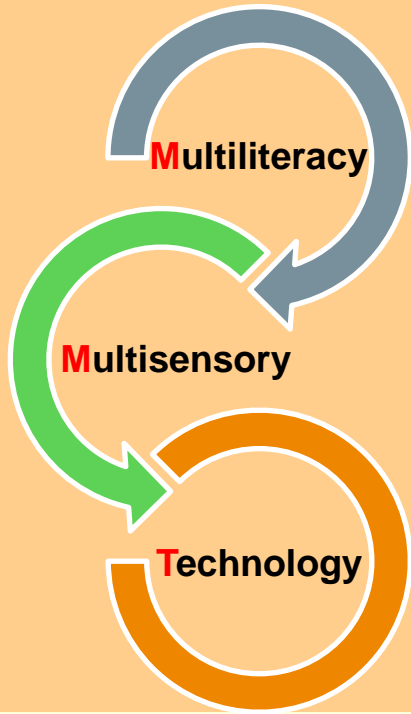
Hybrid

Multisensory Reading to Learn Activities

User Suggestions

An Accessible Format

Strategy Highlights



Spotlight - Therapy Dog for Reading

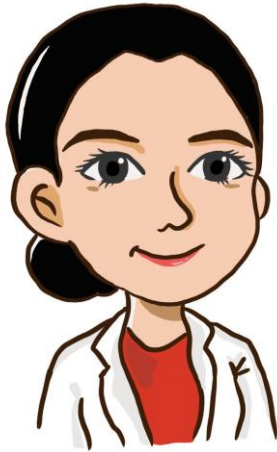
<https://www.youtube.com/watch?v=Rve1DukX3Mo>

Final Thoughts



NLB LAB25: The Future of Your Learning and Discovery
<https://www.youtube.com/watch?v=uOfQMXQ4IL8>

Thank you!



Helen Chan
helenmyc331@gmail.com

References

- CELIA Working Groups (2017). Accessibility Guidelines for Public Libraries in Finland. Retrieved from https://www.ifla.org/wp-content/uploads/2019/05/assets/libraries-for-print-disabilities/conferences-seminars/Brussels/brussels_kirsi_ylanne_finnish_accessibility_guidelines_for_public_libraries.pdf
- IFLA School Libraries Section Standing Committee (2015). IFLA School Library Guidelines. Retrieved from <https://www.ifla.org/wp-content/uploads/2019/05/assets/school-libraries-resource-centers/publications/ifla-school-library-guidelines.pdf>
- Irvall, Birgitta and Nielsen, Gyda Skat (2005). IFLA Access to libraries for persons with disabilities. Retrieved from <http://archive.ifla.org/VII/s9/nd1/iflapr-89e.pdf>
- National Library Board (2021). *About LAB25*. Retrieved from <https://www.nlb.gov.sg/WhoWeAre/AboutUs/AboutLAB25.aspx#lab25>
- Office of the Government Chief Information Officer (2019). Web Accessibility Handbook. https://www.ogcio.gov.hk/en/our_work/community/web_mobileapp_accessibility/promulgating_resources/handbook/doc/Web_Accessibility_Handbook.pdf
- W3C (2018). *Web Content Accessibility Guidelines (WCAG) 2.1*. Retrieved from <https://www.w3.org/TR/WCAG21/>